



Satellite Communications With Serenity

Lesson 2: Tracking Satellites with STL Tracker Live

In this lesson you will learn to use the STL Tracker Live on a PC to:

- Track a satellite
- Know when a satellite enters your line of sight.

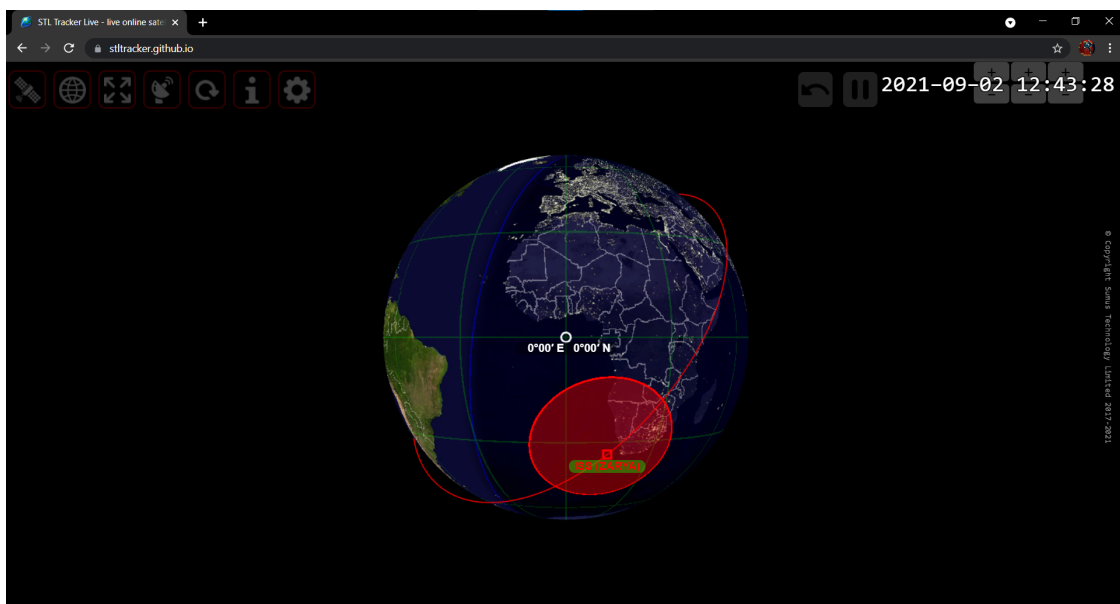
Many satellites use communication modes that require them to be in your line of sight (above your horizon) in order for you to acquire data from them or use them for communication purposes.

What you need

- PC with internet access
- Your location in Latitude and Longitude
- NORAD ID of satellite

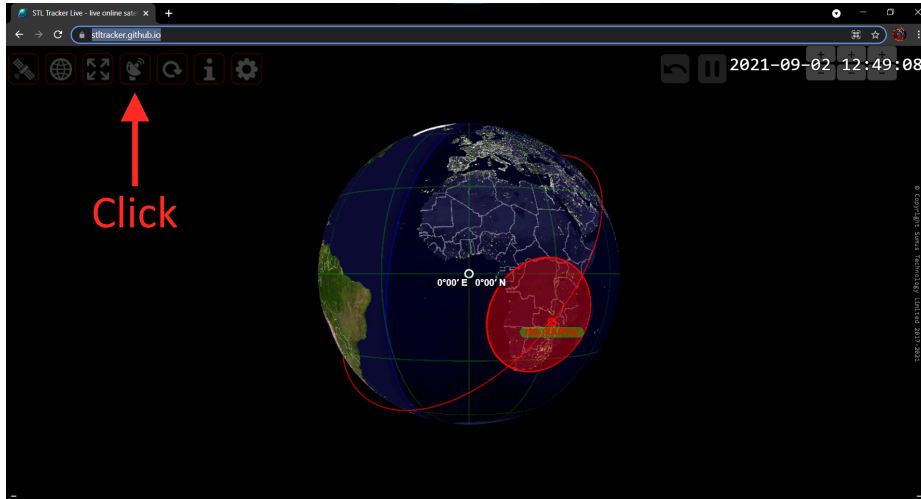
Step One – Navigate to STL Tracker Live

- Using a web browser, navigate to the [STL Tracker Live website](https://stltracker.github.io/). (<https://stltracker.github.io/>)

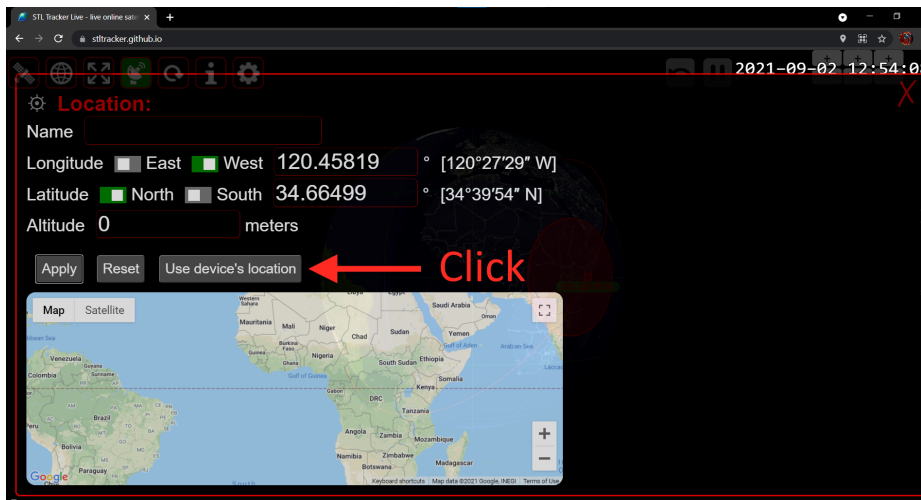


Step 2 – Input your location

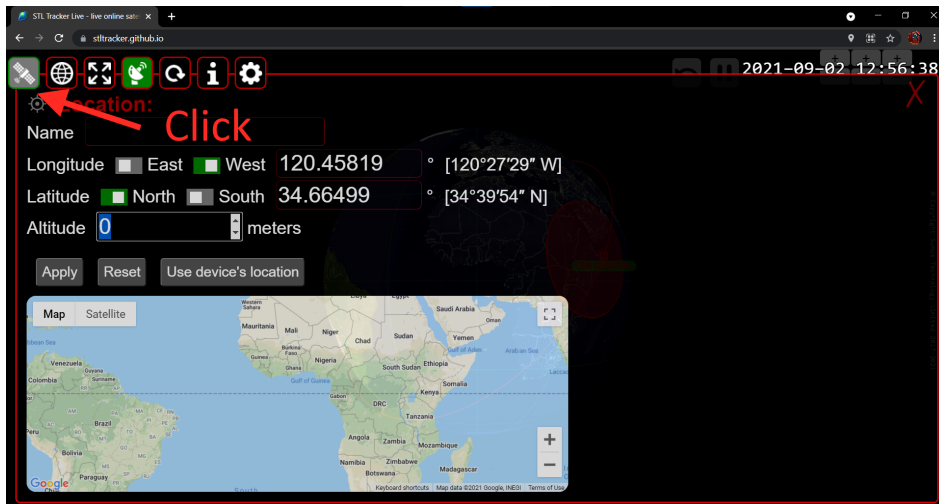
- Click the satellite dish icon at the top of the screen.



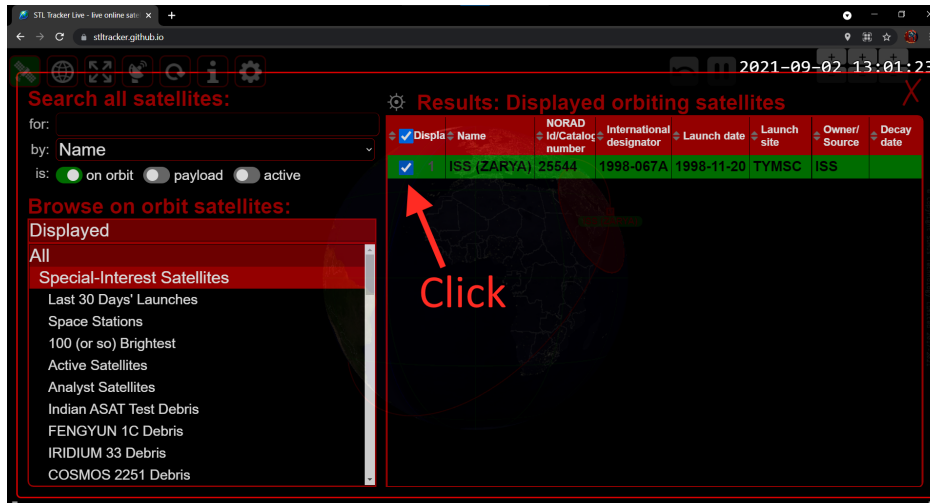
- Click Use device's location or input your latitude and longitude manually.



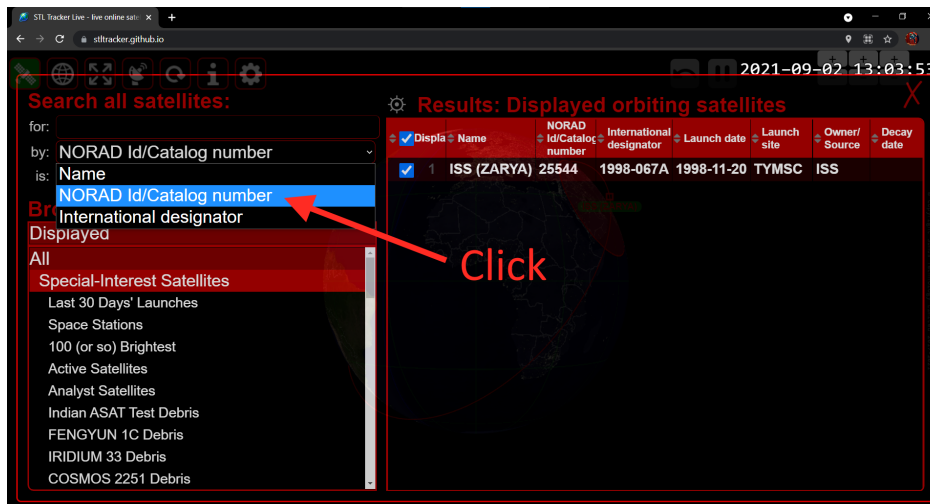
- Click Apply.
- Next, click the satellite icon.



- By default the International Space Station's (ISS) Zarya module will be selected.
- Deselect ISS in the results panel by clicking the check box.



- In the results panel, click the by: dropdown menu and select NORAD Id/Catalog number.



- In the for: box type the satellite's NORAD ID. Serenity's ID is 99506.
- Press Enter.
- In the results panel click the check box next to Serenity.
- Click the red X in the upper right corner of the results panel.

You will now be able to see Serenity's orbit and when it will be overhead at your location.